



1



2



3

Flexamat Composition

Blocks:

- 5000 PSI
- 6.5" x 6.5" x 2.25" with a 1.5" spacing between blocks.
- Pyramid shape

Rolls:

- Multiple Widths – 4', 5.5', 8', 10', 12' & 16'
- Custom lengths up to 125'
- Can ship up to 4800 SF per TL

Interlocking Grid:

- Biaxial Strength of 2,055 lbs
- Polypropylene geogrid with an acrylic coating.
- Resilient to freeze-thaw conditions, soil chemicals and ultra-violet exposure.

4

Flame Resistant Grid



5

One truckload of Flexamat hauling 4800 square feet is equivalent to 32 truckloads of rock rip rap (18" depth)



6



7



8



9



10



11



12



13



14



15



16



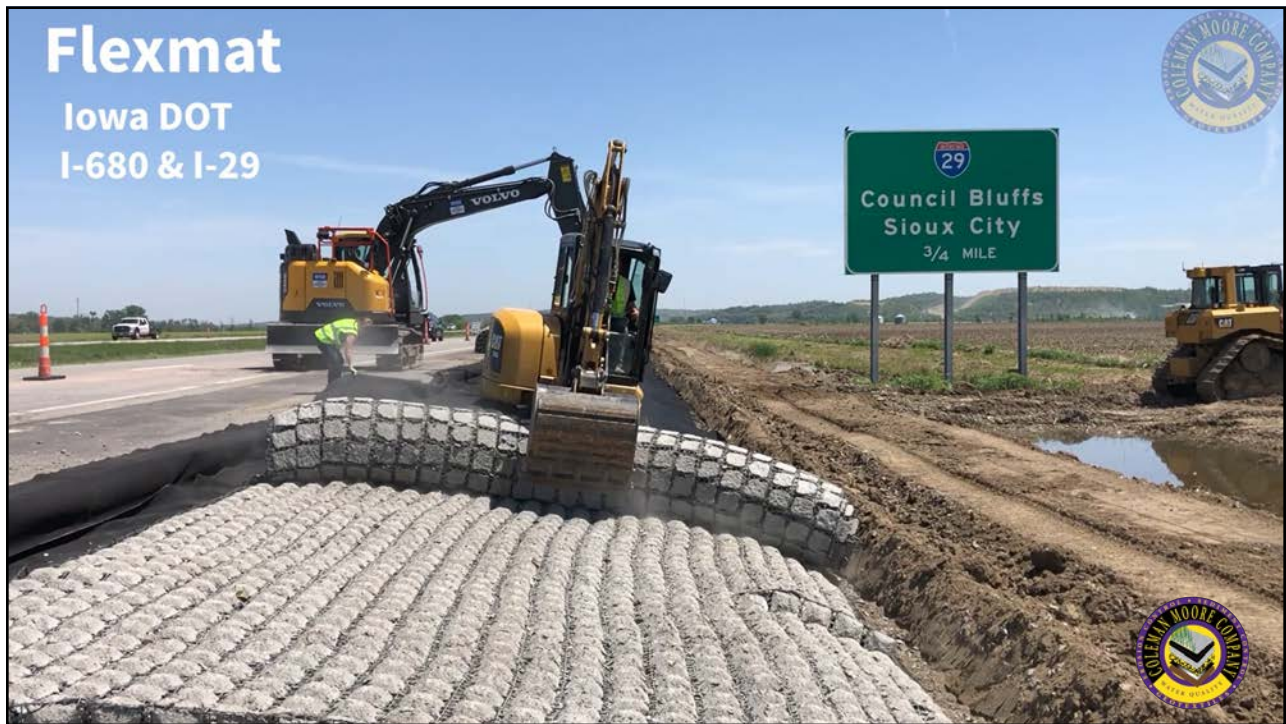
17



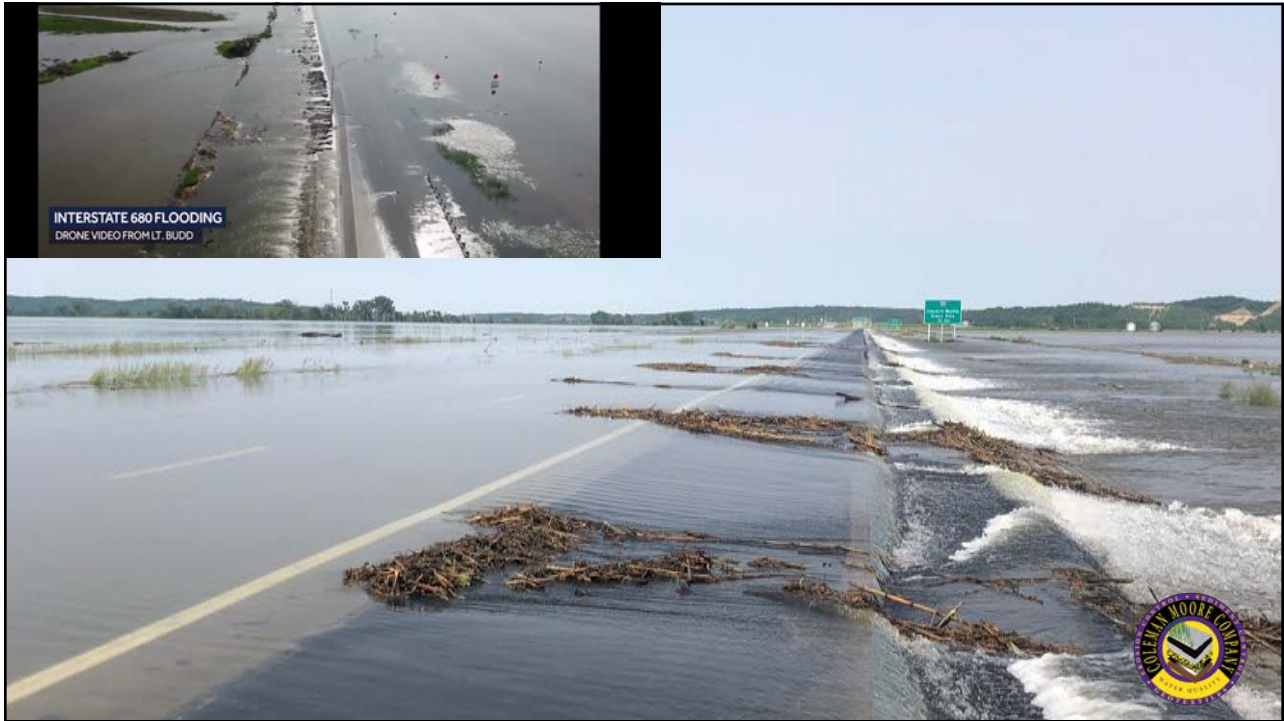
18



19



20



21



22



23



24



25



26



Norwalk Install



27

CONCRETE ABUTMENT ANCHOR TRENCH (TOP VIEW)

CONCRETE ABUTMENT ANCHOR TRENCH

CHANNEL INSTALLATION METHOD

EDGE TERMINATION TRENCH INSTALLATION METHOD

FLEXAMAT OUTLET DETAIL

CONSTRUCTION NOTES:

- GRADE CHANNEL SO THAT WATER WILL FLOW DOWN CENTER OF THE CHANNEL AND BE CONTAINED TO THE CHANNEL. ALL SUBGRADE SURFACES PREPARED FOR PLACEMENT OF MATS SHALL BE SMOOTH AND FREE OF ALL ROCKS, STICKS, ROOTS, OTHER PROTRUSIONS, OR DEBRIS OF ANY KIND. THE PREPARED SURFACE SHALL PROVIDE A FIRM UNYIELDING FOUNDATION FOR THE MATS.
- WHEN VEGETATION IS DESIRED, APPLY SEED AND FERTILIZER DIRECTLY TO THE PREPARED SURFACE SOIL PRIOR TO FLEXAMAT INSTALLATION. USE SEED PER PROJECT SPECIFICATIONS.
- INSTALL FLEXAMAT ROLLS AVAILABLE WIDTHS ARE 4', 5.3', 8', 10', 12', AND 16' AVAILABLE IN CUSTOM LENGTHS. FOR WIDTHS WIDER THAN 16', INSTALL 15.5" WIDE MAT WITH 12" GEOTEXTILE EXTENSION AND 6" UNDERLAYMENT EXTENSION.
- WHERE POSSIBLE AVOID LONGITUDINAL ABUTMENT SEAMS IN CHANNEL BOTTOM.
- AT THE BEGINNING OF CHANNEL, THE INITIAL LEADING EDGE OF FLEXAMAT EXPOSED TO CONCENTRATED FLOW SHALL BE EMBEDDED 18" VERTICALLY INTO ANCHOR TRENCH. THE TRENCH SHALL BE FILLED WITH 4,000 PSI CONCRETE.
- AT THE END OF THE ARMORED CHANNEL, EMBED THE MAT 18" IN A TERMINATION TRENCH. FILL AND COMPACT TERMINATION TRENCH WITH A COHESIVE FILL.

PIPE DIAMETER	FLEXAMAT WIDTH	FLEXAMAT LENGTH (*MIN)
12"	8 CFS	5.3'
18"	20 CFS	8'
24"	30 CFS	8'
36"	75 CFS	12'
48"	100 CFS	16'
60"	150 CFS	20'

*CONSULT MANUFACTURER FOR GUIDANCE IF DESIGN DISCHARGE VARIES SIGNIFICANTLY FROM VALUES LISTED IN TABLE

*LENGTH OF PROTECTION WILL VARY ON THE LENGTH OF THE SLOPE, DEGREE OF SLOPE, OR IF IT IS DISCHARGING ONTO A FLAT AREA. OUTFALLS DISCHARGING ONTO SLOPES IT IS RECOMMENDED TO EXTEND FLEXAMAT THE LENGTH OF THE SLOPE AND 3' PAST THE TOE.

MOTZ ENTERPRISES, INC.

Flexamat

Telephone: (513)772-6689

Email: info@Flexamat.com

Website: Flexamat.com

28



29



30



31

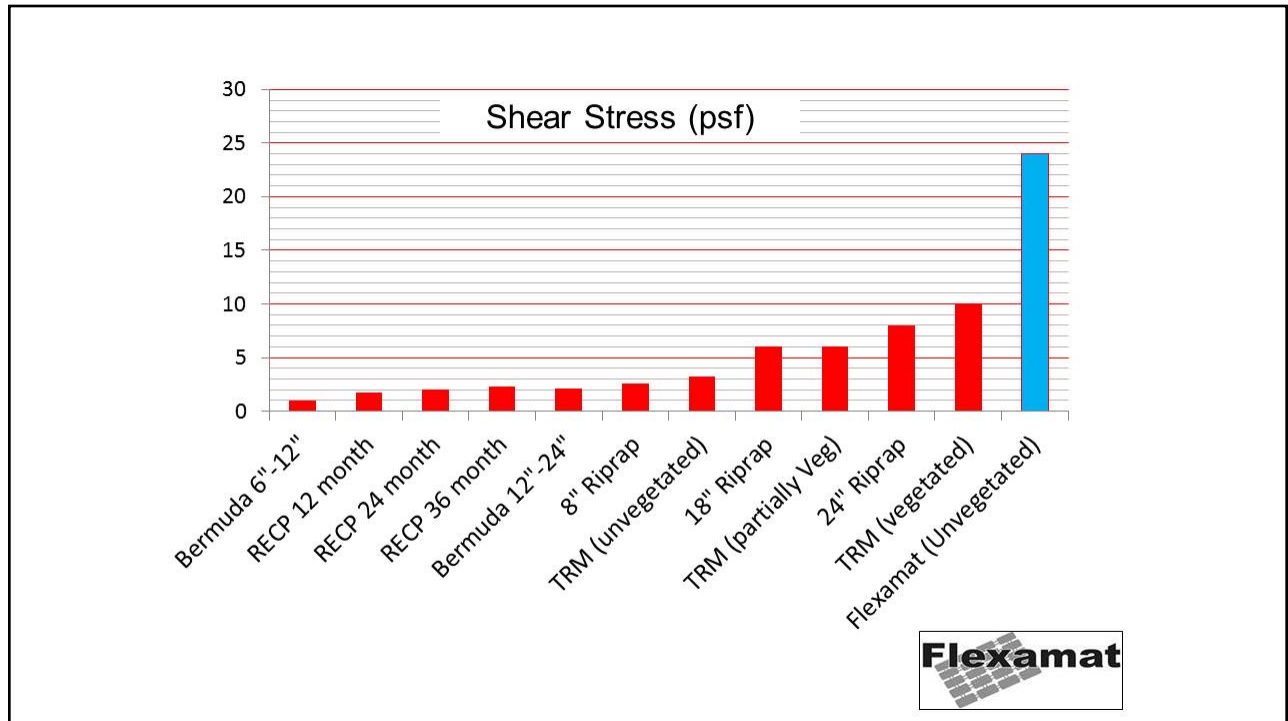
ASTM: D6460 Large Scale Flume



Limiting Shear	Limiting Velocity
24+ psf	19+ ft./sec



32



33



34



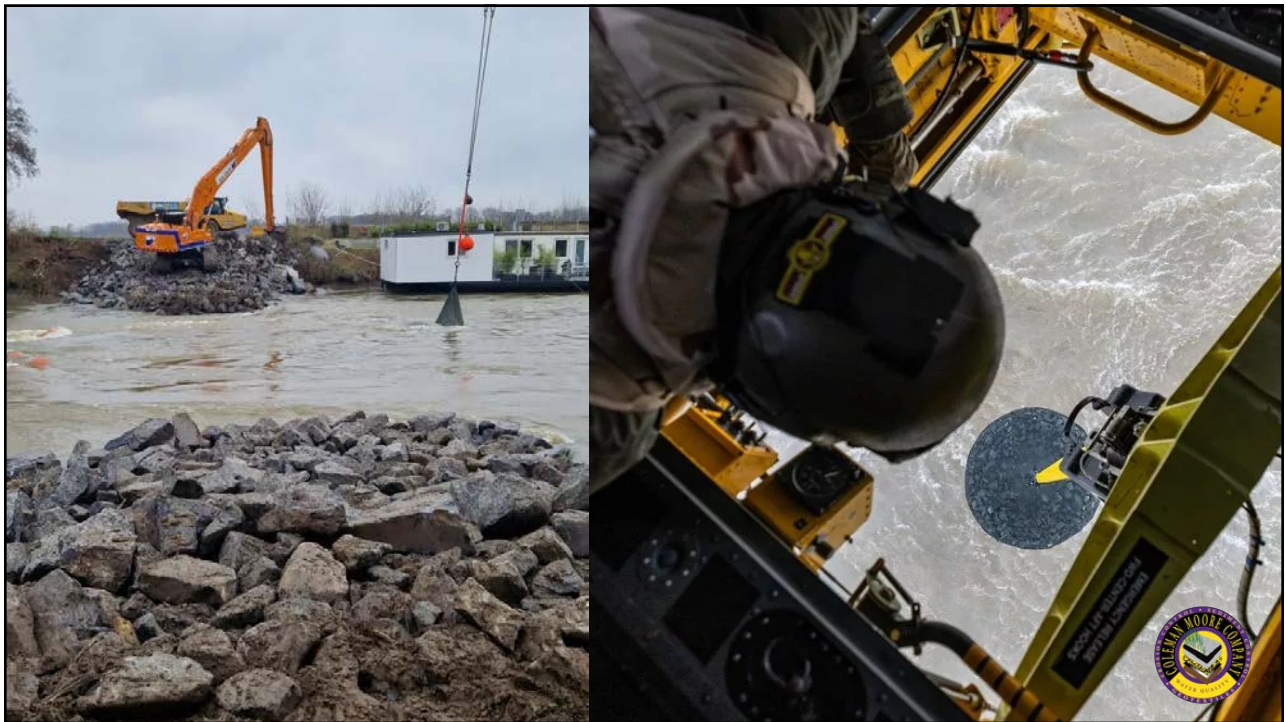
35



36



37



38



Black Hawk County



39



Linn County Conservation
Cedar Valley Nature Trail
Phase 1



40



41



42



43



44



45



46



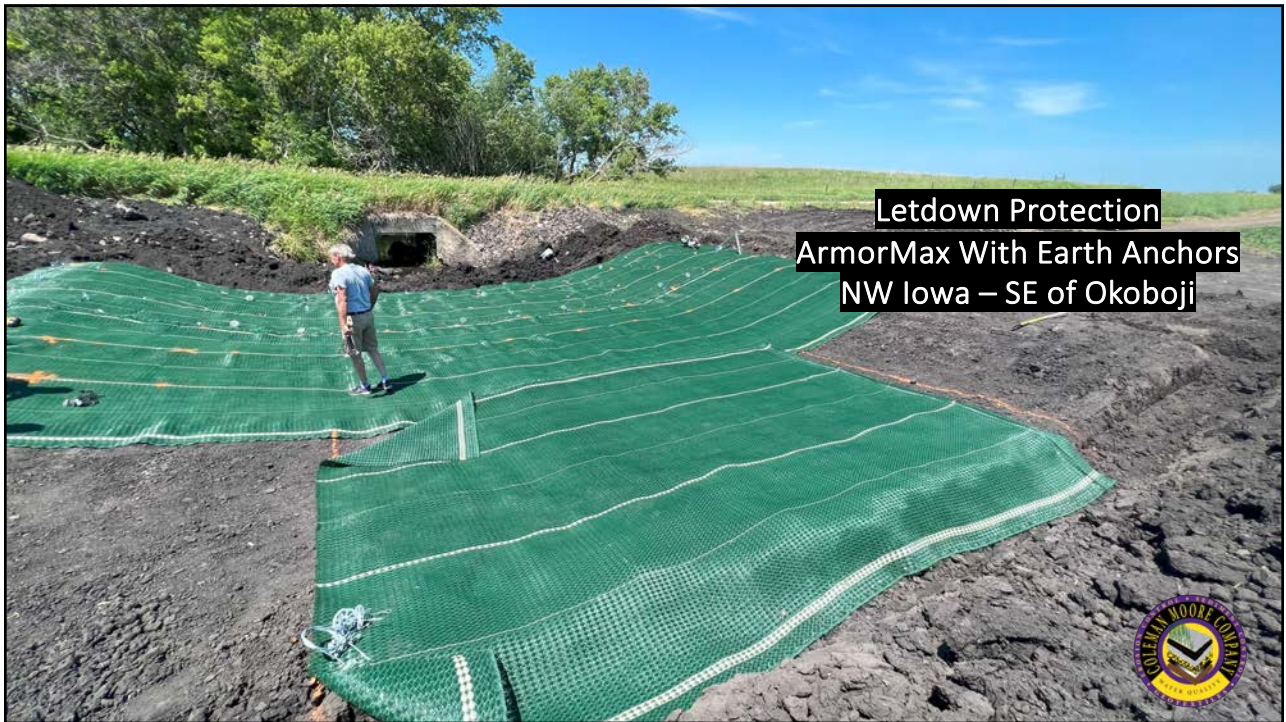
47



48



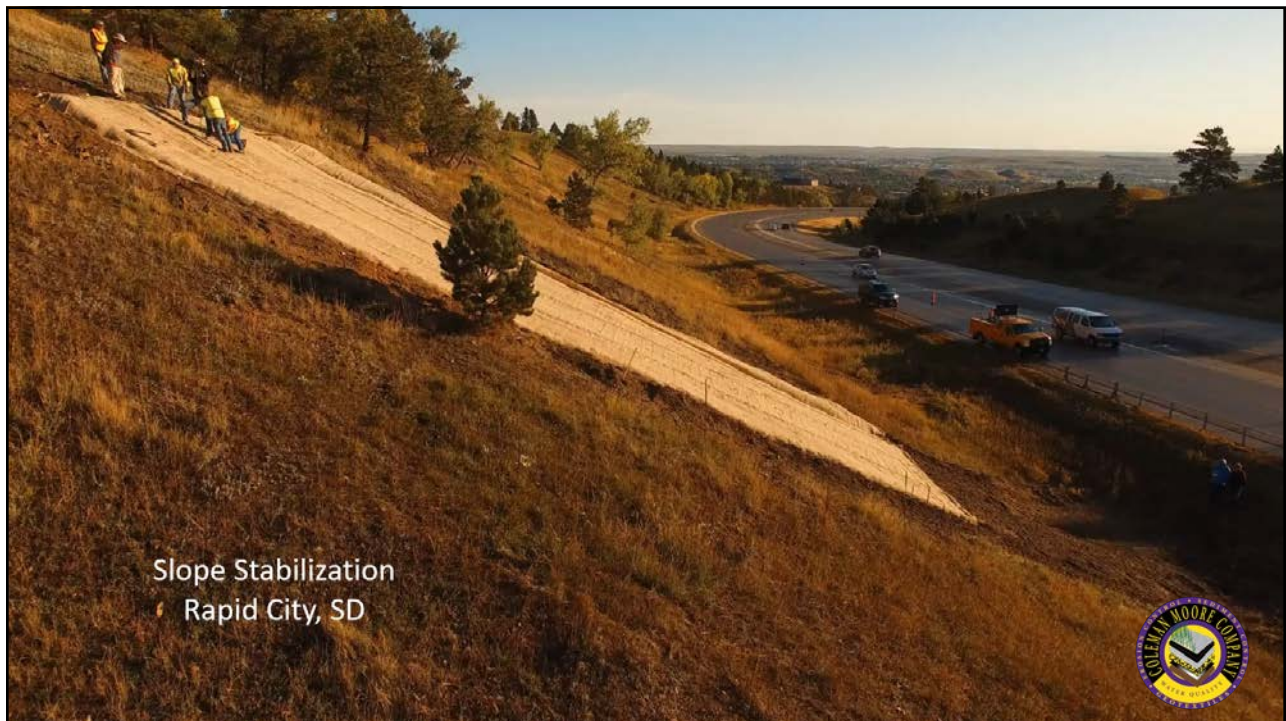
49



50



51



52



53



54



55

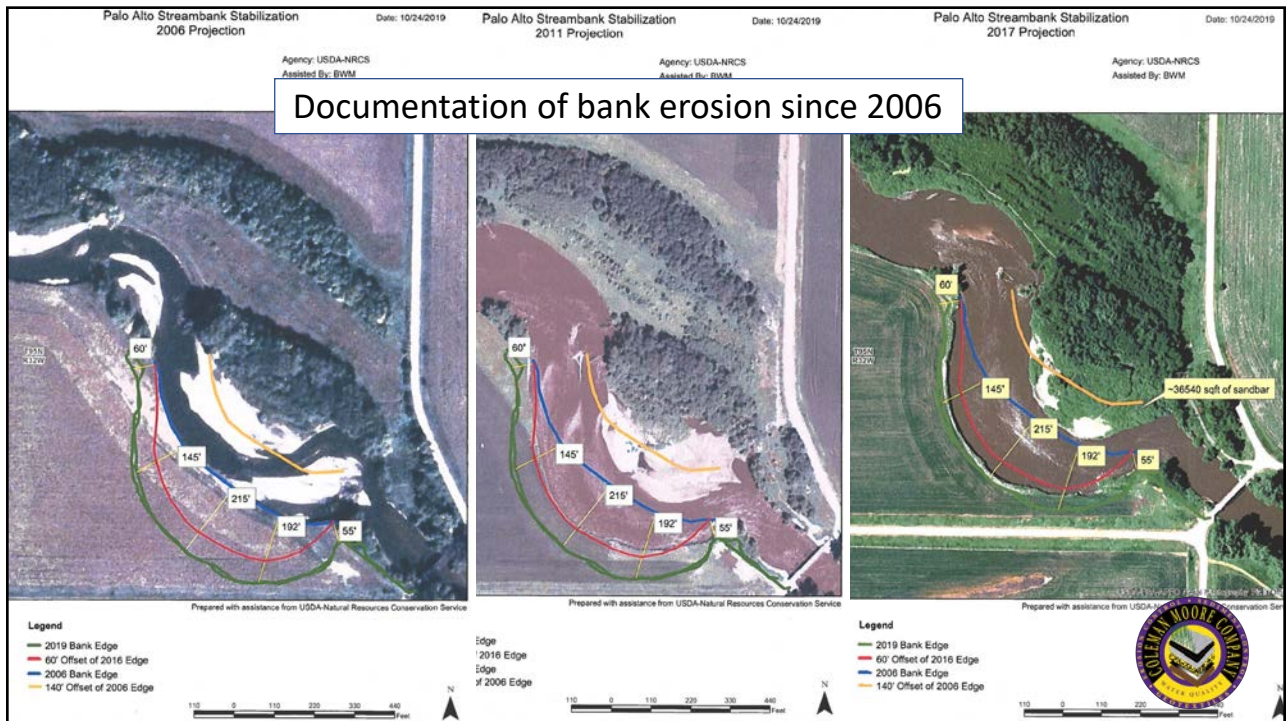


Bank Stabilization
West Branch Des Moines River
Palo Alto County
SCOURLOK® & ARMORMAX®

56



57

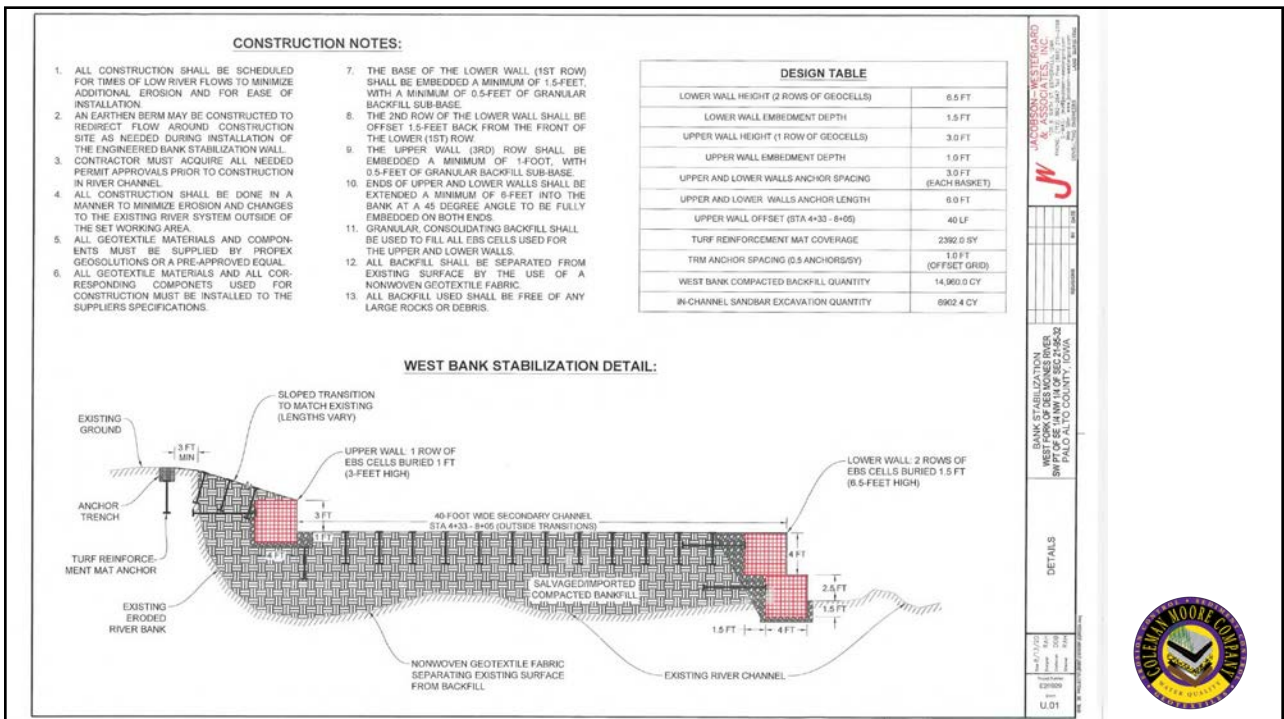


58



Onsite material used to fill 4' tall 3'x3' units. Soil, sand, and aggregate are typically acceptable fill material.

59



60



61



62



63



64



65



66



67



68



69



70



Thank You!

Mark Moore

Coleman Moore Company

mrmoore@colemanmoorecompany.com

515-681-8164